

# M E L O D I U M

SPACE AS AN INSTRUMENT, HUMAN AS THE MUSICIAN, NATURE AS THE MUSIC

## CONCEPT

A musical retreat center focusing on relaxation and spiritual comfortability by enhancing the sound of nature. Inside the space, one could rock and roll with the rhythm of the water waves : to rock with the slightly swaying floor and to roll sound echoes from water organ that produces melodic sounds according to the waves. One could play the organ, dance to the music, all while enjoying the community of people who gather to have fun, converse, make friends with the music of nature as the media

- I - Safety + Belonging = Harmonizing Retreat
- II - Safety + Mattering = Retrograding for Big Picture
- III - Belonging + Mattering = Gearing Wheel

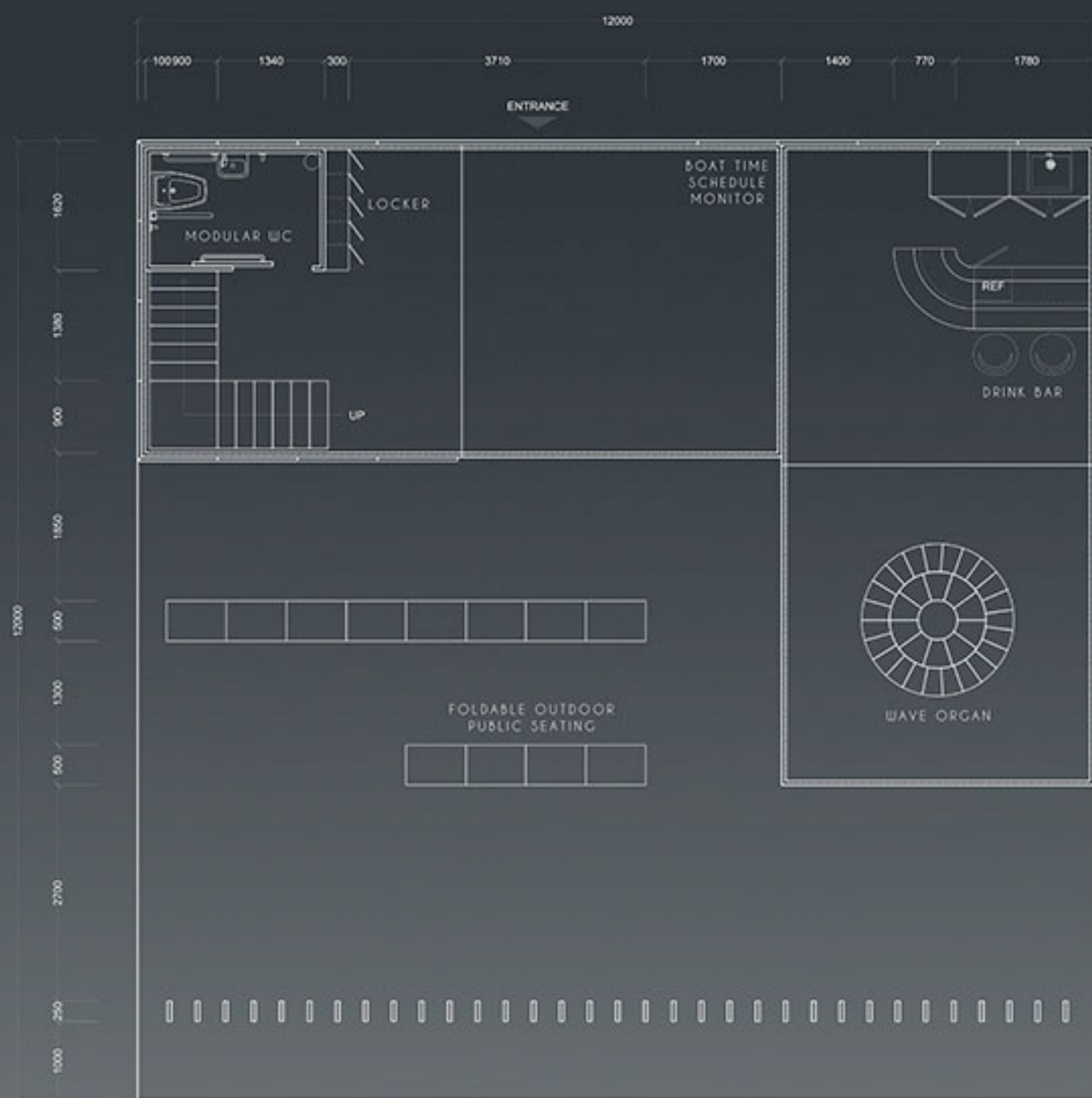


## HUMAN-CENTERED

Once humans could afford food and shelter, we all yearn for self-actualization. However, before we could enter the state, we need 3 essential keys : safety, mattering, and belonging. Without these, humans would not be able to perform, innovate, feel emotionally engaged, or move forward

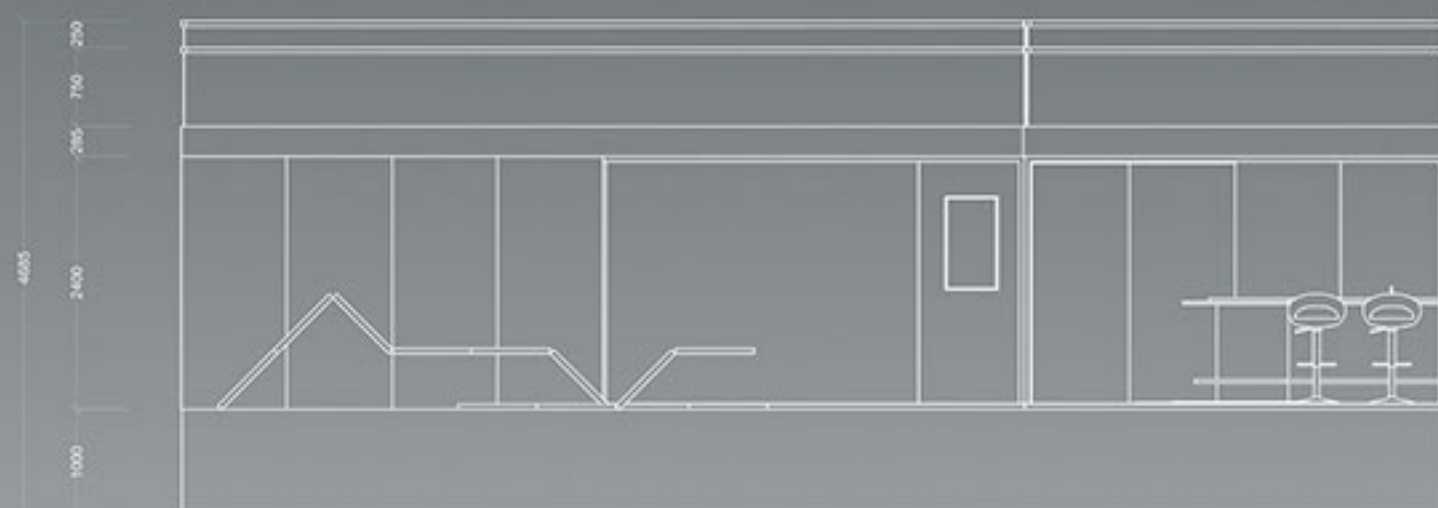






FURNITURE LAYOUT PLAN

SCALE 1 : 75



SECTION

SCALE 1 : 75



MATERIAL



CEMENT  
Flooring Structure



RECYCLED STEEL FRAME  
Roof and Wall Support;  
Recycled and Recyclable



POLYSTYRENE  
Buoyancy Support  
Structure



RECYCLED WATER RESISTANT  
ENGINEERED WOOD POLYMER  
Interior Flooring



RECYCLED GRADIENT GLASS  
Transparent Wall



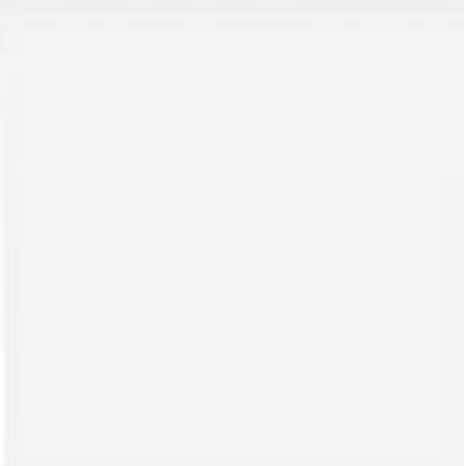
RECYCLED STEEL WALL  
Wall; Recycled and Recyclable



N 1884  
D\_Old Boots



N 1929  
P\_Enticed



N 1971  
P\_Cloud Formation



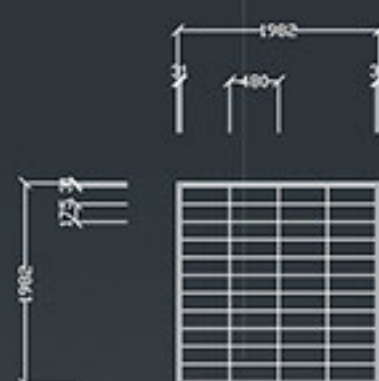
N 1992  
P\_Stiletto Gray



BGG 1808  
T\_Harbour Shadow



BGG 1807  
D\_Slate Crest



STRUCTURE ASSEMBLE

As all of the structure are parts assembling together, the plan could differ in varieties, providing maximum flexibility and making both the space and function adaptable to all regions



## SEA LEVEL RISE

Since at least the start of the 20th century, the average global sea level has been rising. Between 1900 and 2016, the sea level rose by 16-21 cm. More precise data gathered from satellite radar measurements reveal an accelerating rise of 7.5 cm from 1993 to 2017, which is a trend of roughly 30 cm per century. There are also many countries that have been facing severe flooding issues, thus the idea of the project having knock-down, buoyant structure



2.5 x 12.0 x 2.0  
Weight <30 t



## LAWS AND REGULATIONS (TH)

With the example project plan located on riverside of Chao Phraya River, Bangkok, Thailand, the dimension of all parts are restricted due to the following rules :

### Section 77

The pillar for fixing the raft is prohibited from being placed more than one and a half meters above the frontline of the raft

### Section 79

It is forbidden to place a raft along the Bangkok port area that is wider or longer than **16 meters**, including those territories and the small raft that is connected to the interfaces.

### Section 80

It is forbidden to place a raft more than **12 meters** wide along the canal

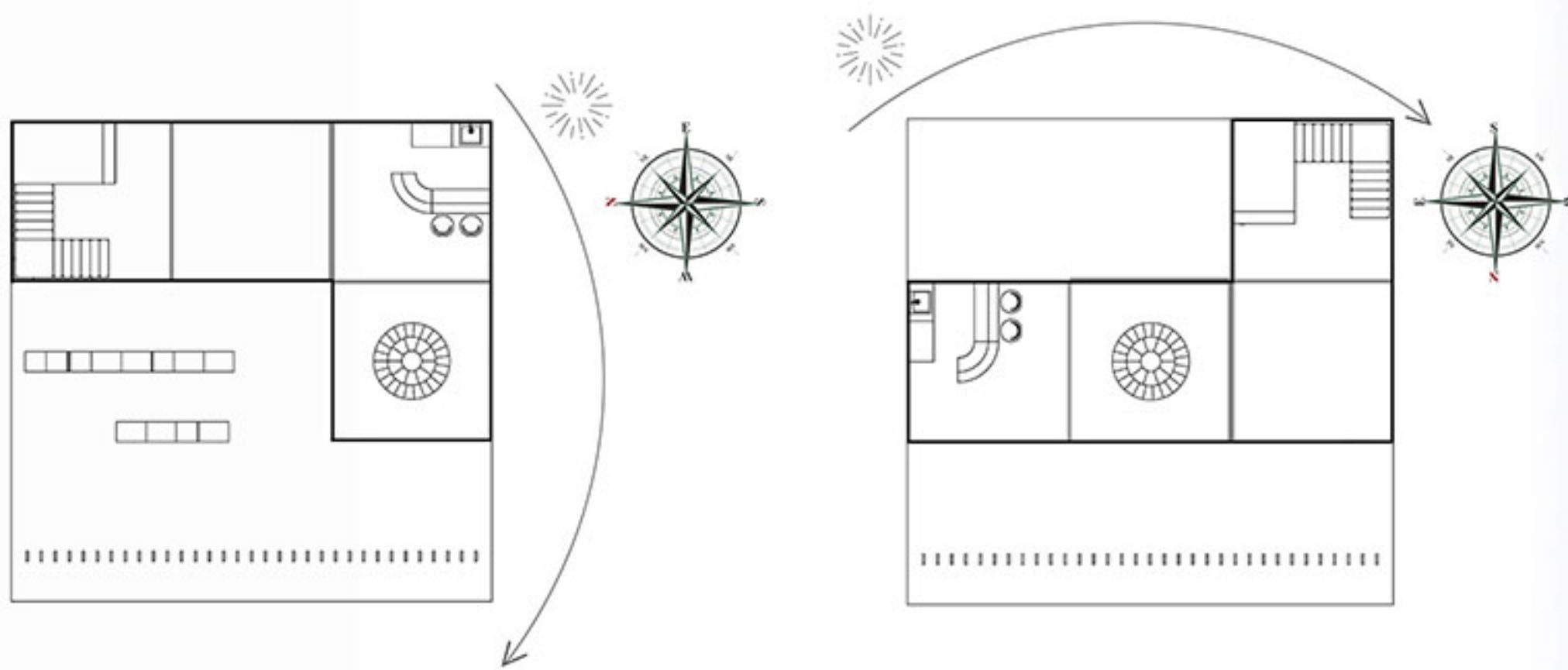
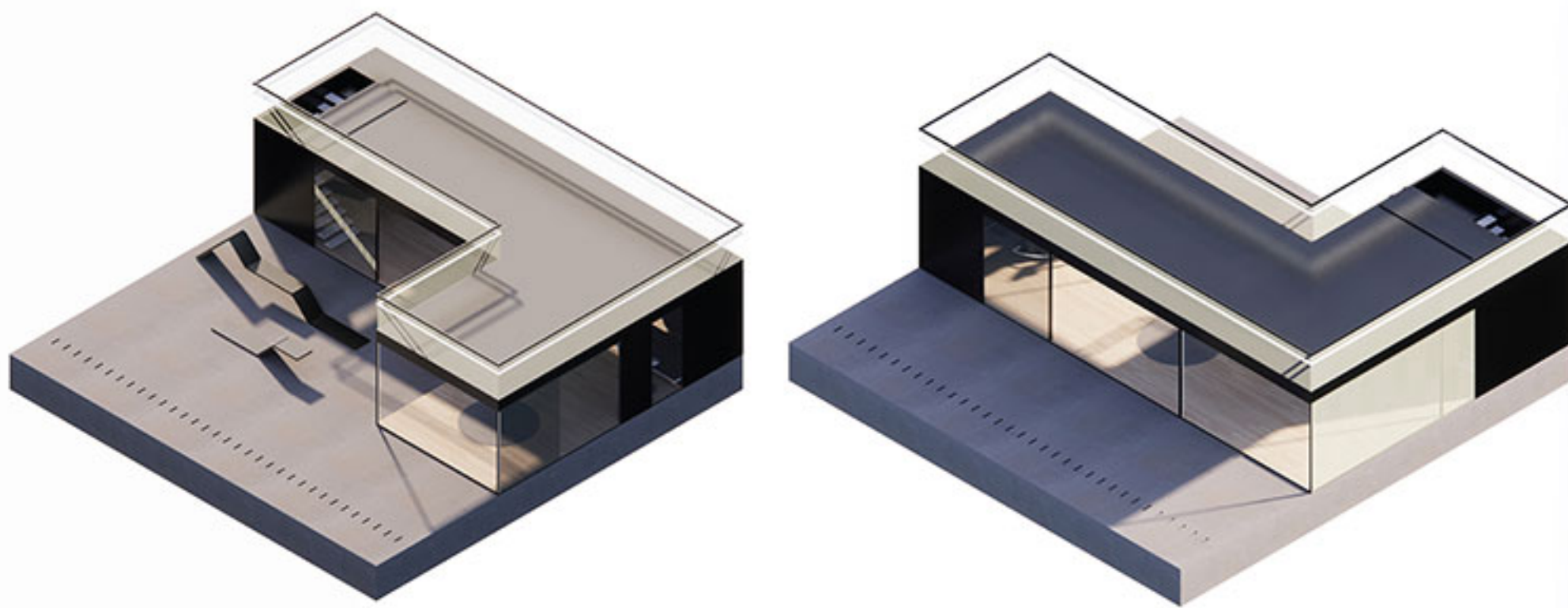
DAY



NIGHT

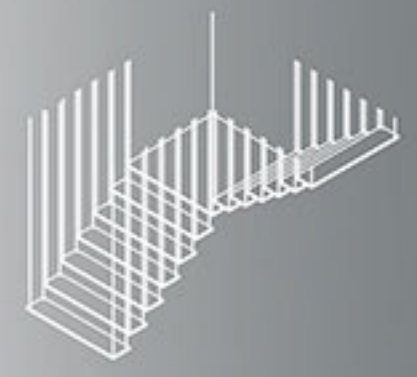
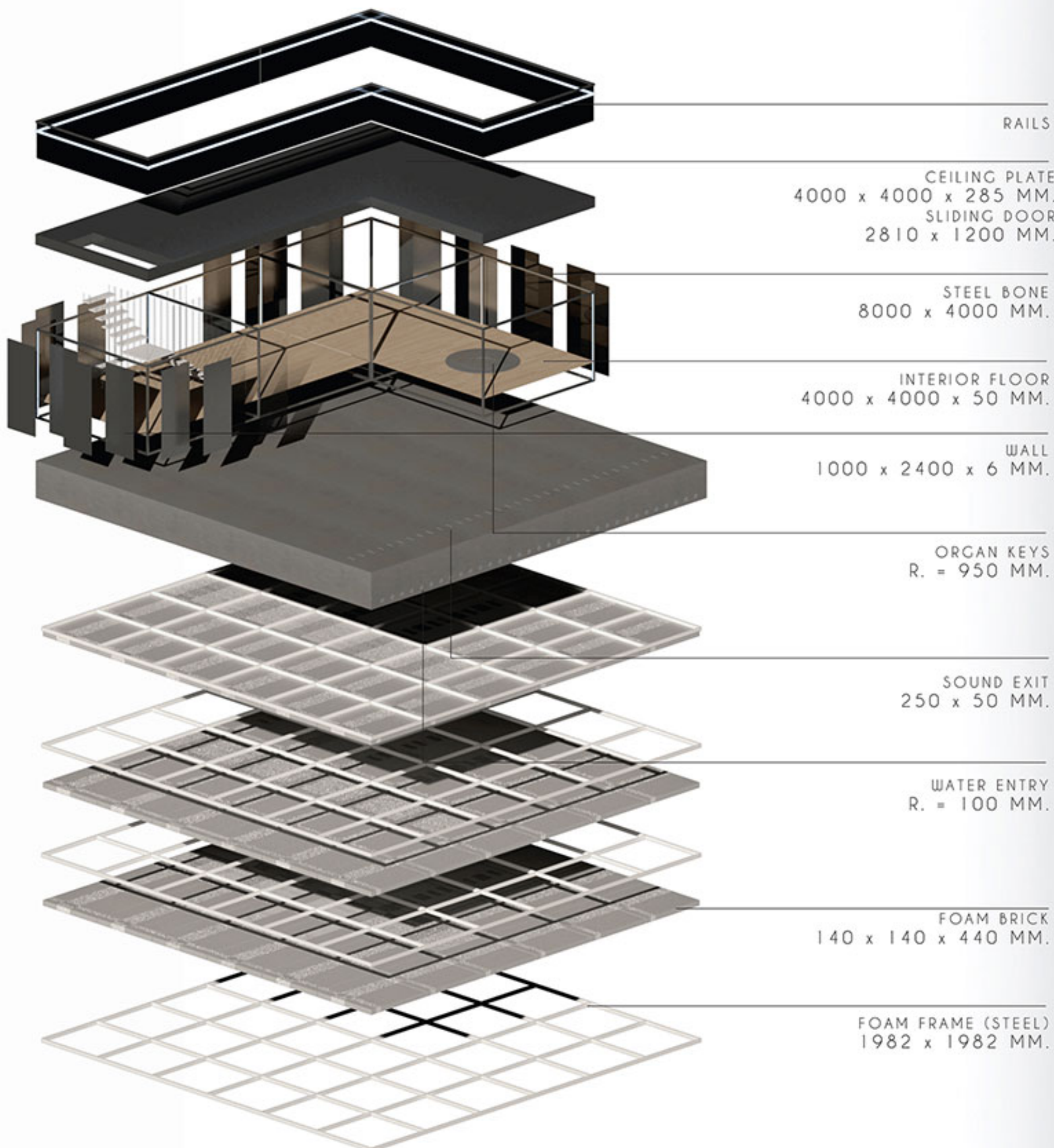




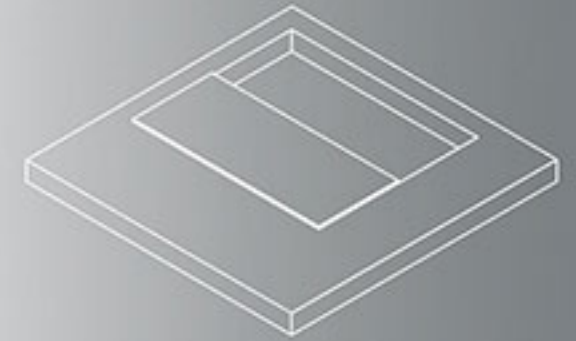


## VARIATION EXAMPLE

Examples of plans and structural parts being assembled differently according to location, which means different wind and sun direction and also different function in the area during day and night, depending on the community



STAIRS PLATE  
AND STEEL SLING



CEILING PLATE WITH  
SLIDING DOOR FOR  
STAIRS



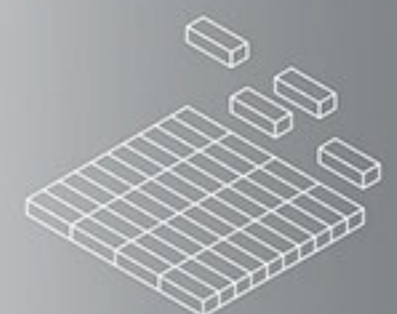
CEILING PLATE



STEEL AND  
GLASS WALL



WAVE ORGAN  
KEYS



POLYSTYRENE  
FOAM



WOOD FLOOR



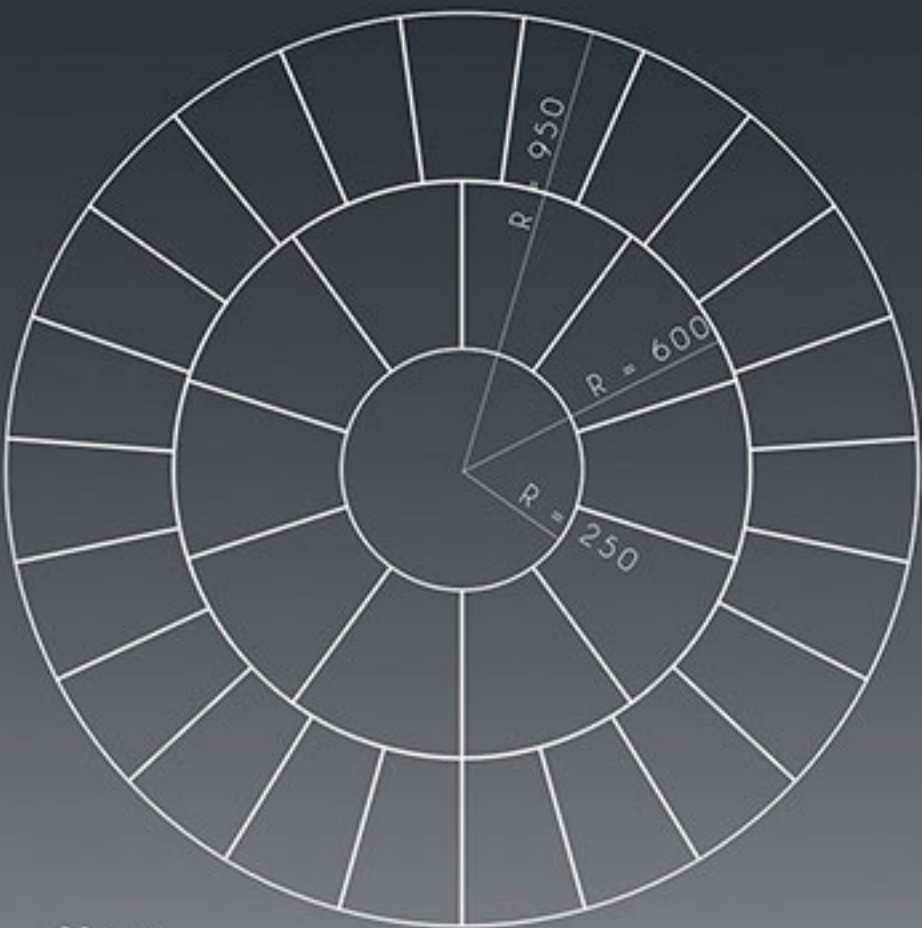
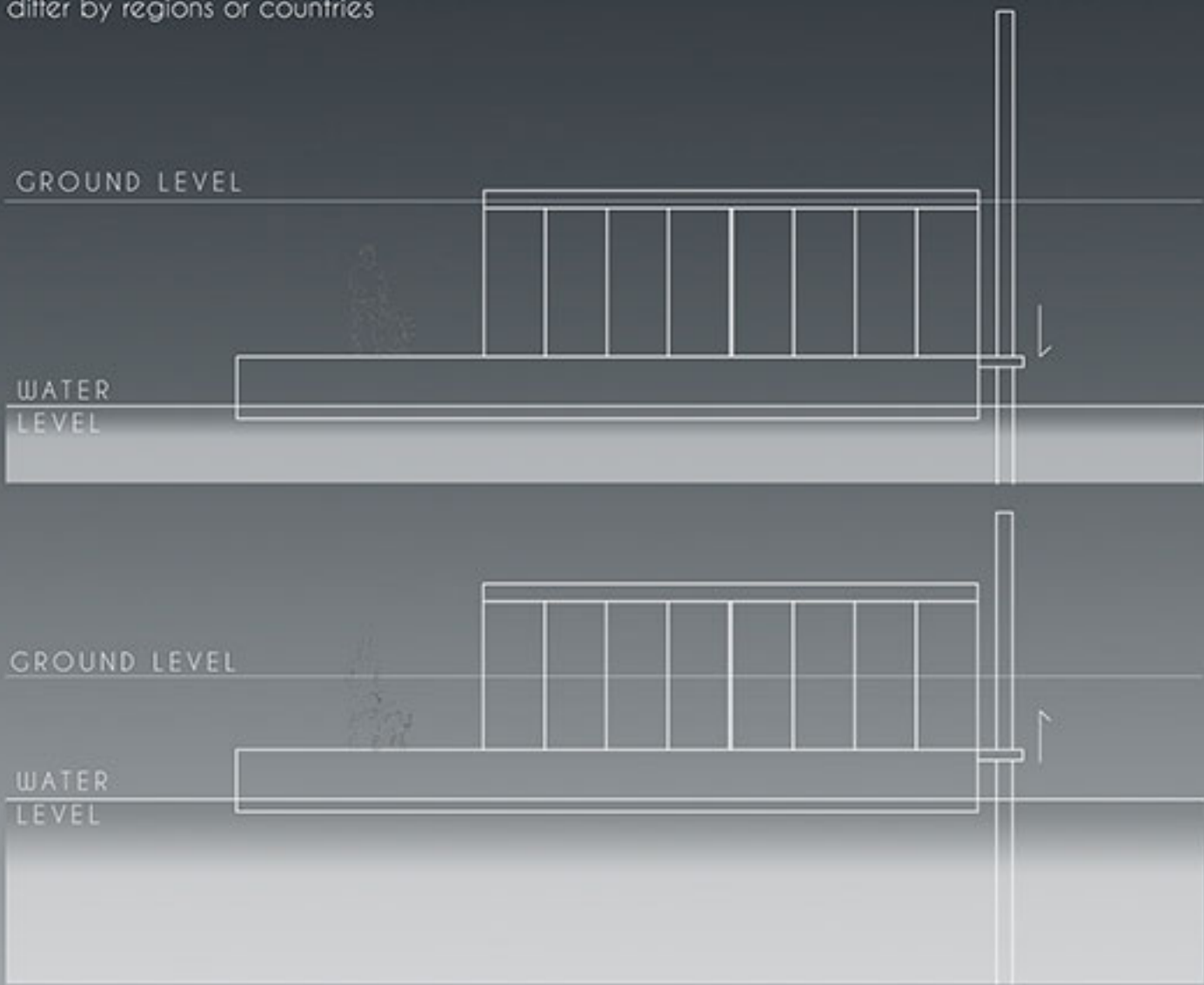
STEEL BONE

## STRUCTURAL PARTS



POLE AND HOLDING

With pole pinning to the ground, the project could rise up and down according to water level by the elastic holding that connects the raft and the pole. The dimension and distance are differ by regions or countries



Outer Circle : 23 keys  
Inner Circle : 10 keys

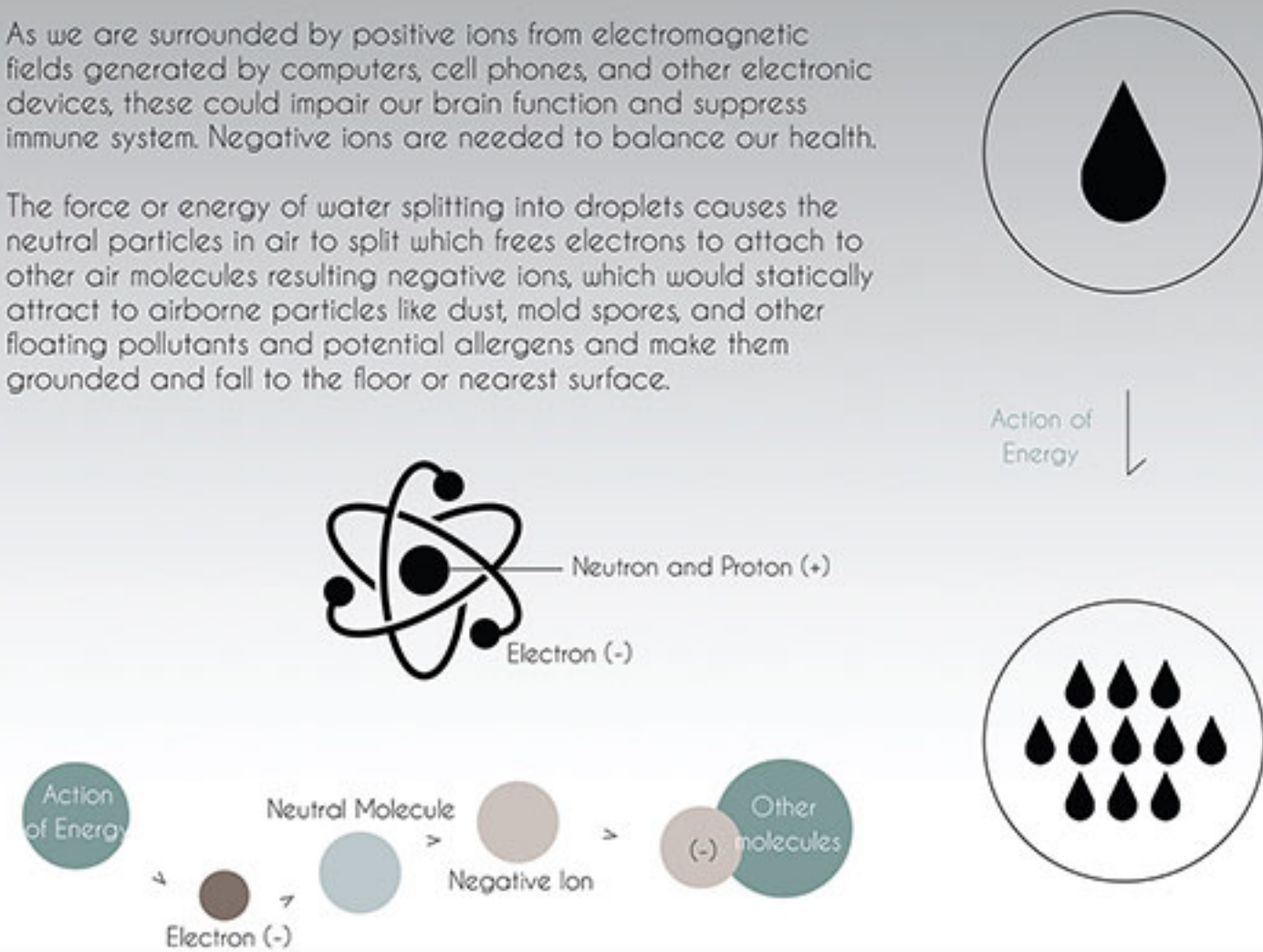
WAVE ORGAN KEYS

Keys connected to the pipe (sound exit). When pressed, the lid of the pipe slides open and the sound comes out. The lids could be locked for open and close

NEGATIVE IONS FROM DROPLETS OF WATER

As we are surrounded by positive ions from electromagnetic fields generated by computers, cell phones, and other electronic devices, these could impair our brain function and suppress immune system. Negative ions are needed to balance our health.

The force or energy of water splitting into droplets causes the neutral particles in air to split which frees electrons to attach to other air molecules resulting negative ions, which would statically attract to airborne particles like dust, mold spores, and other floating pollutants and potential allergens and make them grounded and fall to the floor or nearest surface.



WAVE ORGAN SECTION

(Reference from the Sea Organ Zadar)

